

# Infrared APC Laser Module

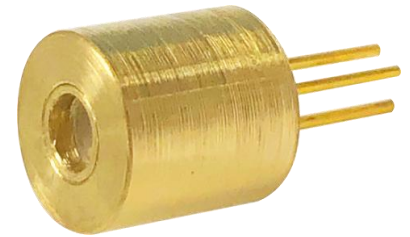
AML-R065-830XXX-01

6-2D-LM83-001\_Rev.00

## Φ6.5mm 830nm Laser Module With Random Dots Pattern

### Features

Power set by user  
High quality Random pattern DOE  
Random Dot >30,000



### Absolute maximum ratings

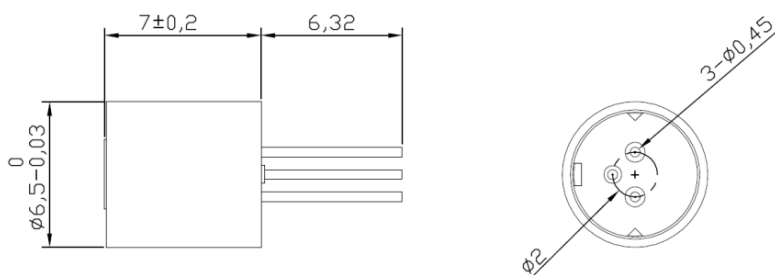
Parameter	Symbol	Rating	Unit
Laser Module Optical Output Power	Po	160	mW
Reverse Voltage (LD)	VRL	0	V
Reverse Voltage (PD)	VRD	30	V
Forward Current (PD)	IFD	10	mA
Operation Case Temperature	TC	-10~50	°C
Storage Temperature	Ts	-40~85	°C

### Electrical and optical characteristics (T<sub>c</sub>=25 °C)

Parameter	Symbol	Min.	Typ.	Max.	Unit	Conditions
Wavelength	λ	-	830	-	nm	Po= 150mW
Threshold Current	I <sub>th</sub>	-	65	80	mA	
Operation Current	I <sub>op</sub>		260	350	mA	Po =150mw
Operation Voltage	V <sub>op</sub>		2	2.4	Volt	Po =150mw
Monitor Current	I <sub>m</sub>	0.4	1.7	2.15	mA	Po =150mw VRD=5V
Random Dot				>30,000		
Field Of View (FOV)				80°		
Image Ratio (Diagonal)				4:3		

\* Sufficient heat dissipation is required for CW operation.

### Outline dimensions (Units: mm)



ARIMA LASERS CORP.

PHONE: 886-3-4699800 | FAX: 886-3-4699600

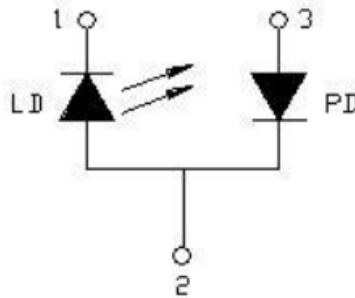
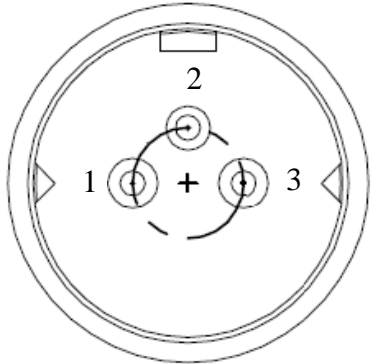
E-MAIL: Ldsales@arimalasers.com | www.arimalasers.com

For reference only. Contents above are subject to change without notice.

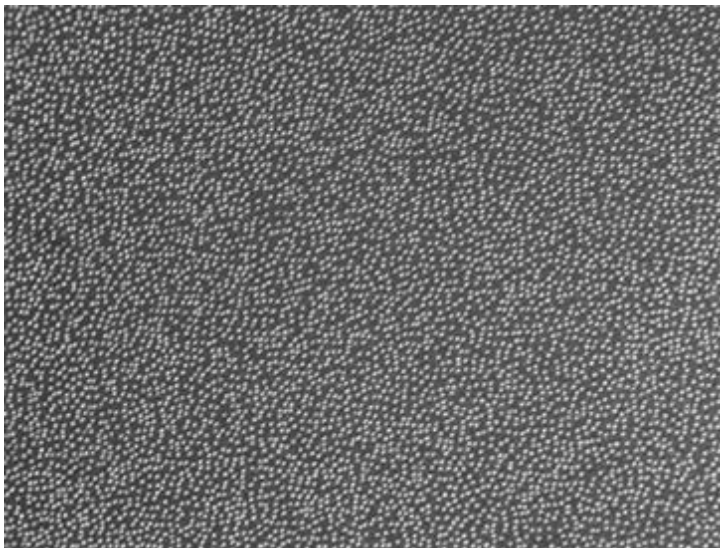
**Arima**  
LASERS

## Φ6.5mm 830nm Laser Module With Random Dots Pattern

### PIN Assignment:



### DOE Pattern



#### • Precautions

- \* Do not operate the device above maximum ratings. Doing so may cause unexpected and permanent damage to the device.
- \* Take precautions to avoid electrostatic discharge and/or momentary power spikes. A change in the characteristics of the laser or premature failure may result.
- \* Proper heat sinking of the device assures stability and lifetime. Always ensure that maximum operating temperatures are not exceeded.
- \* Observing visible or invisible laser beams with the human eye directly, or indirectly, can cause permanent damage. Use a camera to observe the laser.
- \* No laser device should be used in any application or situation where life or property is at risk in event of device failure.
- \* Specifications are subject to change without notice. Ensure that you have the latest specification by contacting us prior to purchase or use of the product.

#### ARIMA LASERS CORP.

PHONE: 886-3-4699800 | FAX: 886-3-4699600

E-MAIL: [Ldsales@arimalasers.com](mailto:Ldsales@arimalasers.com) | [www.arimalasers.com](http://www.arimalasers.com)

*For reference only. Contents above are subject to change without notice.*